



# The DIR Floortime Model for Treating Autism & Special Needs

February 13-16, 2017

Saro-Maria Hotel, Addis Ababa



sponsored by:



**Saro-Maria Hotel**  
Service Is Our Passion

**Ethiopian**

የኢትዮጵያ  
THE NEW SPIRIT OF AFRICA

A STAR ALLIANCE MEMBER



ነሐምያ ት.ዝም ማዕከል  
NEHEMIAH AUTISM CENTER



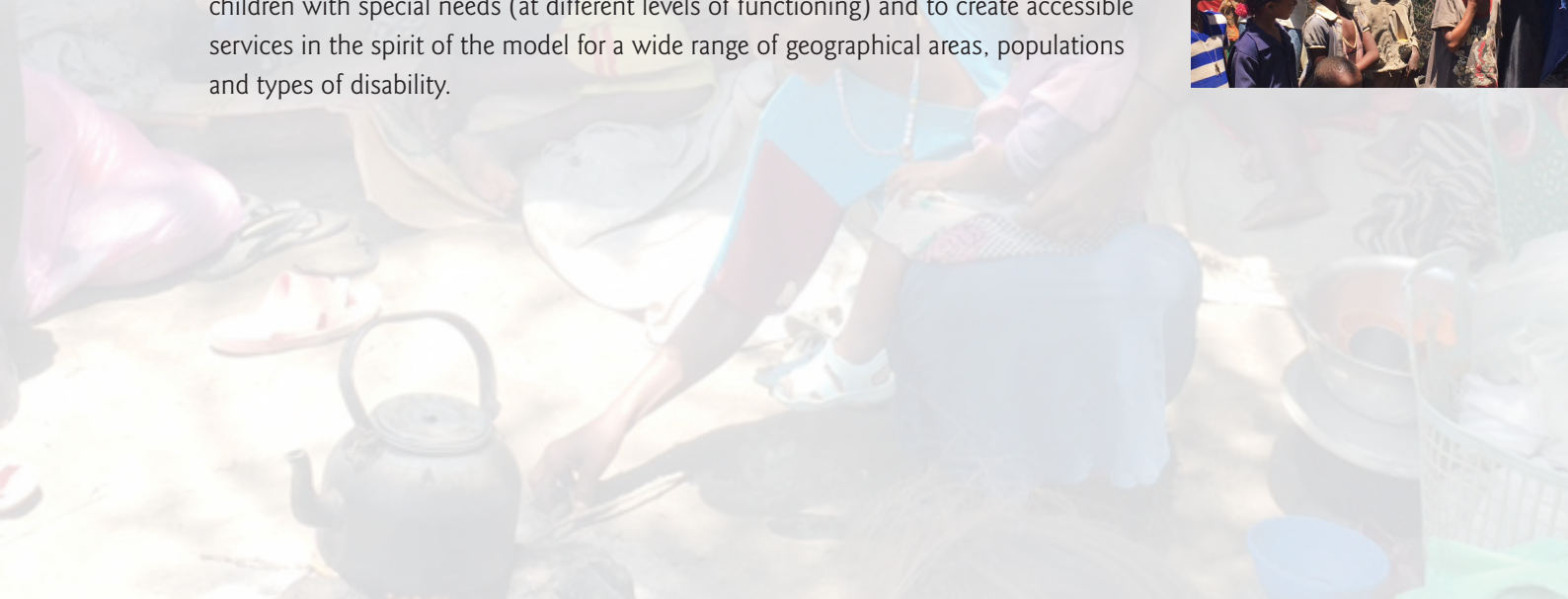
# The DIR Floortime Model for Treating Autism & Special Needs

## What is the DIR model?

- The Developmental, Individual differences, Relationship-based model (DIR), developed by Dr. Serena Wieder and the late Dr. Stanley Greenspan, is a framework for assessment and intervention for children with special needs.
- The objectives of the DIR model are to build healthy foundations for social, emotional, and intellectual capacities rather than focusing on skills and isolated behaviors.
- The model incorporates elements of knowledge from different developmental areas and applies a comprehensive developmental-emotional approach.
- According to the principles of the model, the therapeutic process is based on identifying the sources of strength and the challenges of each child in the different developmental areas, identifying the child's areas of interest, and tailoring the process to the child's special characteristics and significant relationships.

## The DIR Israel Organization

- The DIR Israel organization is a nonprofit multi-disciplinary organization, the mission of which is the establishment and promotion of the DIR model and integrative therapy for children with developmental difficulties.
- The organization operates to teach the model and support its implementation for families and educational professionals around the country.
- Since 2002, the DIR Israel steering committee has been advocating the study and promotion of the model, on a voluntary basis, under the guidance of its mentor and the model co creator, Dr. Serena Wieder. The official organization was founded in 2012.
- The goals of the organization are to implement the model and promote its use among children with special needs (at different levels of functioning) and to create accessible services in the spirit of the model for a wide range of geographical areas, populations and types of disability.



# The DIR Floortime Model for Treating Autism & Special Needs

During the workshop, we will explore concepts based on the knowledge from the fields of Occupational Therapy, Speech and Language Pathology, Psychology and Education. We will identify and discuss individual differences and their impact on social-emotional development; We will define Functional Emotional Developmental Levels and illustrate them through case examples. Throughout the conference, knowledge base of the neurobiology of autism and regulatory disorders will be developed and a multi-disciplinary team approach to treating these disorders will be highlighted.

February 13, 2017

## DAY ONE

08:00 – 09:00 Registration

- 09:00 – 09:30
- Welcoming speech from Saro-Maria Hotel  
Mr. Samuel Omalla, manager of Saro Maria hotel  
Mr. Alemayehu, owner of Saro Maria hotel
  - Opening speech by  
Mrs. Nefertiti Makeda, Head of Andinet International school.  
Mrs. Belaynesh Zevadia, The Israeli Ambassador to Ethiopia
  - Facilitator:  
Mr. Workneh Endazenaw, Special Education Expert and Staff Development Coordinator, Andinet International school

09:30-10:30 Introduction to Autism & special needs & the use of DIR Floortime model in treatment of Autism and other developmental disorders  
Mrs. Yael Bruck Binya

10:30-11:00 What is Floortime  
Mrs. Yael Bruck Binya

11:00-11:20 Break

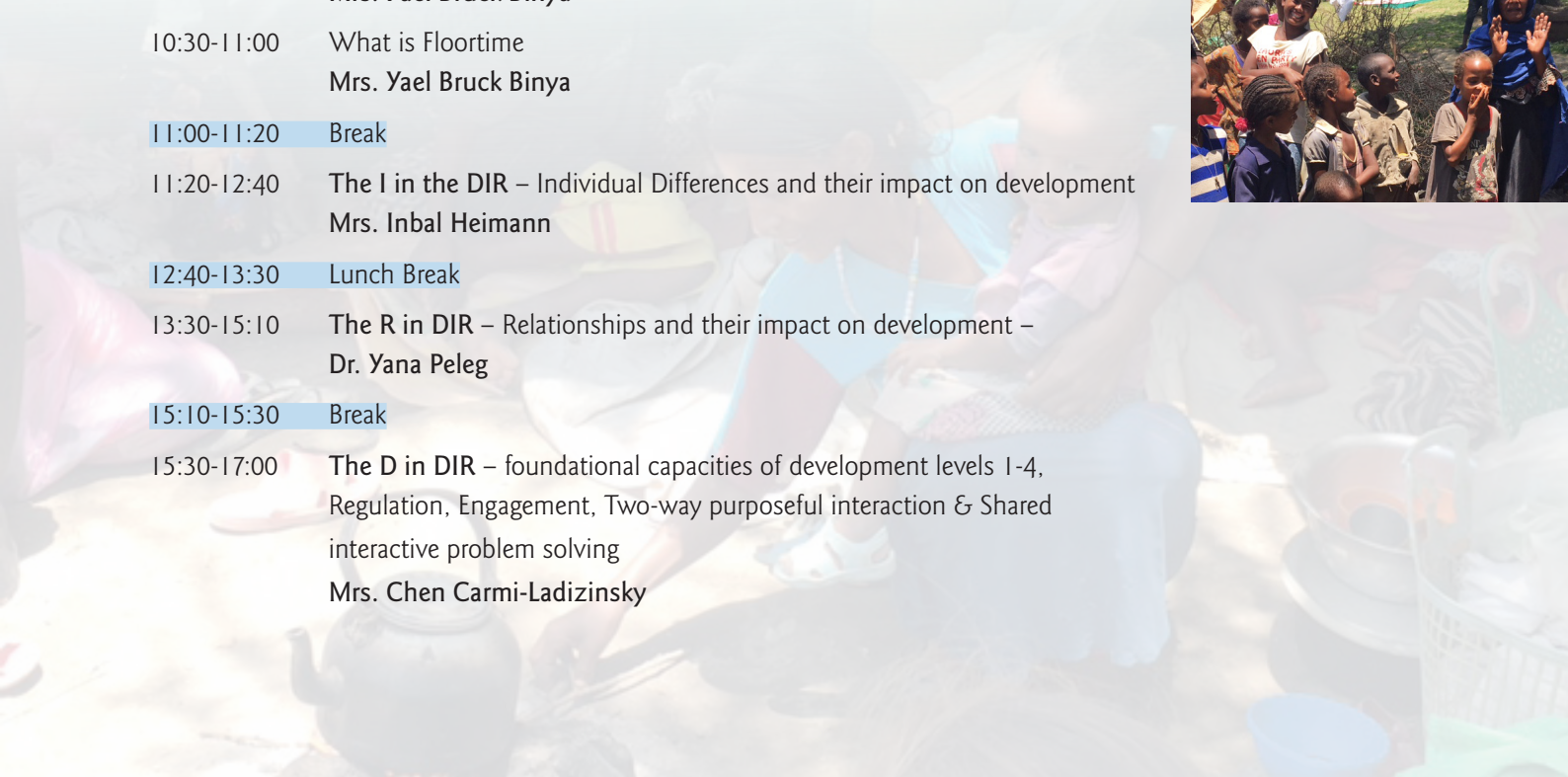
11:20-12:40 The I in the DIR – Individual Differences and their impact on development  
Mrs. Inbal Heimann

12:40-13:30 Lunch Break

13:30-15:10 The R in DIR – Relationships and their impact on development –  
Dr. Yana Peleg

15:10-15:30 Break

15:30-17:00 The D in DIR – foundational capacities of development levels 1-4, Regulation, Engagement, Two-way purposeful interaction & Shared interactive problem solving  
Mrs. Chen Carmi-Ladizinsky



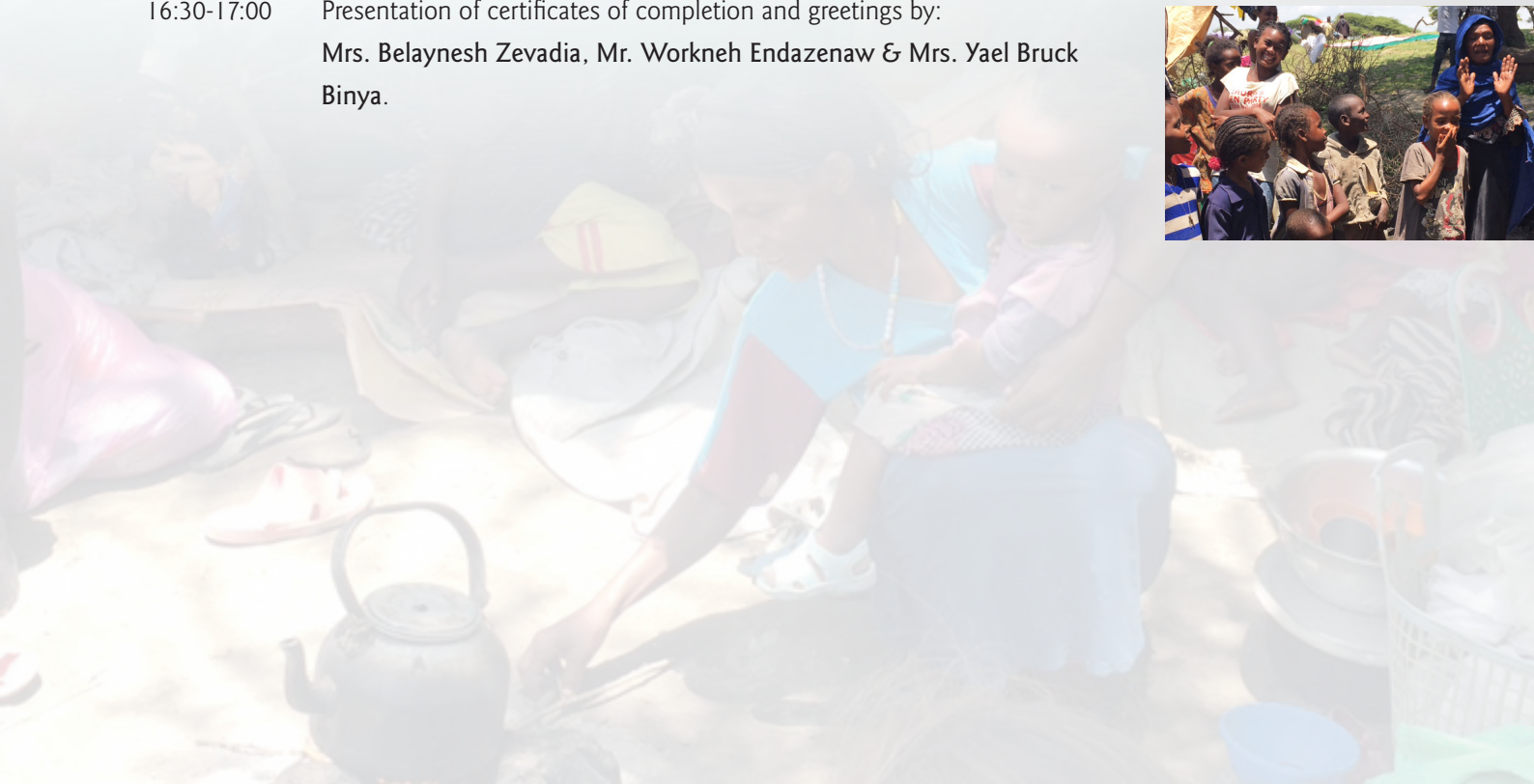


# The DIR Floortime Model for Treating Autism & Special Needs

February 14, 2017

## DAY TWO

- 09:00-09:40 **The D in DIR** – foundational capacities of development levels 5-6 – Creative ideas and emotional thinking, Building bridges between ideas and abstract thinking – **Dr. Yana Peleg.**
- 09:45-11:15 Looking at communication & language development through the lens of DIR – **Mrs. Maya Kestenbaum.**
- 11:15-11:35** Break
- 11:35-12:45 Floortime Principles, Strategies & Treatment – **Mrs. Yael Bruck Binya**
- 12:45-13:30** Lunch Break
- 13:30-14:45 Learning & Semi Structured intervention – **Mrs. Rachel Fridenshtien.**
- 14:45-15:10** Break
- 15:10-16:10 Integrative Intervention – multidisciplinary team panel – The perspective of each discipline.
- 16:10-16:30 Q&A
- 16:30-17:00 Presentation of certificates of completion and greetings by: **Mrs. Belaynesh Zevadia, Mr. Workneh Endazenaw & Mrs. Yael Bruck Binya.**





# The DIR Floortime Model for Treating Autism & Special Needs

February 15-16, 2017

## CLINICAL DAYS (DAY THREE & FOUR)

Wednesday 09:00-16:00

Thursday 09:00-13:00

A team of two-three clinicians will spend two days in a preschool/school setting and will supervise, assess, think together with the local team on both clinical and educational perspectives of using the DIR model.

Application of the model will be explored and demonstrated with the team. We will guide the work through clinical cases of children and families in the local setting, during interactions, therapy sessions, and classes, looking at Emotional, Social and Cognitive Development, Providing assessment through Floortime interactions and aiming to promote integrative consideration of a treatment plan using the DIR model.





## ABOUT THE PRESENTERS

◆ **Yael Bruck Binya** OTR/L is an occupational therapist and a doctoral student at the Professional School of Psychology. She specializes in the field of special needs and autism, and serves as the General manager of the Israeli DIR organization. Yael finished her bachelor's degree in occupational therapy in 1994 and has been working since then, her master's degree was in Child Development and she is now a doctoral student at PSP.

DIR Israel is the official organization that trains therapists and educators who work with children with special needs using the DIR model by Greenspan and Wieder. The organization is part of a large nonprofit organization called the Society for Children at Risk.

In addition to her role as a manager, mentor, consultant, and trainer with the DIR Israel organization, Yael runs a private clinic where she provides therapy to children with developmental delays and autism, sensory disorders, regulation disorders, sensory affective regulation and senso-motor delays. Yael lectures, provides trainings & mentors multi-disciplinary teams, and individual therapists in private and public settings nationally and internationally.

◆ **Maya Kestenbaum**, B.A SLP is a registered and licensed Speech and Language Pathologist since 2000 and is a faculty member in DIR Israel organization. She specializes in working primarily with children and adolescents diagnosed with Autism Spectrum Disorders and related communication difficulties, utilizing DIR and developmental language models. Maya has a vast experience of over 15 years working with children with special needs in different settings including public service centers, private clinic, home based services, and special education schools and pre-schools. In addition to providing direct service to children and families Maya regularly provides supervision, consultation, and training to professionals and school based teams.

◆ **Chen Carmi-Ladizinsky**, BOTR/L is a registered and licensed Occupational Therapist who has practiced as a DIR/Floortime therapist, supervisor and consultant for over fifteen years. She is a faculty member in a DIR Israel Organization and provides services in a wide range of settings such as schools, preschools, clinics and home consultations. Chen has founded and runs a Multi-Disciplinary private practice in Rehovot, Israel, which provides a wide array of services to children with developmental disorders and their families. In the clinic Chen provides direct services to children and families as well as consultation, training and supervision to other clinicians. In addition she provides training, consultation and supervision in special education schools and preschools focusing on integrative treatment and education.





◆ **Inbal Heimann**, MS. OTR/L, is a registered and licensed Occupational Therapist and a faculty member in the Israeli DIR organization. In addition to her 22 years of work experience as an occupational therapist, Inbal holds a master's degree in Child Development. She utilizes the DIR/Floortime approach to integrate these two fields of expertise in her practice with children with special needs and autism spectrum disorders and their families. Inbal trains and guides clinicians, educators and healthcare-teams in the public system. Inbal also runs a private practice where she treats children with Autism-Spectrum Disorder as well as other regulation difficulties and sensory-motor challenges.

◆ **Rachel Fridenshtien**, MS. OTR/L, is a Registered and a licensed Occupational Therapist and a faculty member in DIR Israel organization. In addition to extensive training and experience in the field of occupational therapy, Rachel holds a Masters degree in Psychoanalytic Observational Studies from the Tavistock and Portman Trust in London. She is combining these fields of expertise in her integrative work with children exhibiting developmental difficulties and with their families. Rachel is a consultant, supervisor and DIR/Floortime Therapist. She is a head of ASD Pre Primary classes unit run by the 'Children At Risk non-profit organization'. In addition Rachel runs a private practice for children with regulatory and sensory integration problems and children diagnosed on the Autistic Spectrum.

◆ **Yana Peleg**, Ph.D. is a licensed clinical psychologist who has received her education and training in California, USA. She has extensive experience in psychotherapy with children and adults and specializes in working with children with Autism Spectrum and other developmental disorders. Dr. Peleg's experience also includes comprehensive diagnostic assessments of young children, infant-parent psychotherapy, program coordination, and clinical supervision. While working California, Dr. Peleg has founded and ran a multidisciplinary clinic specializing in providing integrative treatment to children and families. In the past two years she has been practicing in Israel providing individual services to children and families with a wide range of developmental and emotional difficulties as well as training, supervision and consultation to preschools and individual clinicians.

Dr. Peleg is a faculty member in the DIR Israel organization.

